

STARLIGHT



Different ways of heat dissipation



www.proluxled.com

FEATURES



Streamline design dynamic, fashionable and unique



Automobile manufacturing SMC Polymer Composite Body material, high intensity, lightweight, anti-corrosion ensure longer lifespan.



5 Years Warranty



Long Life
50000 Hours



IP 67

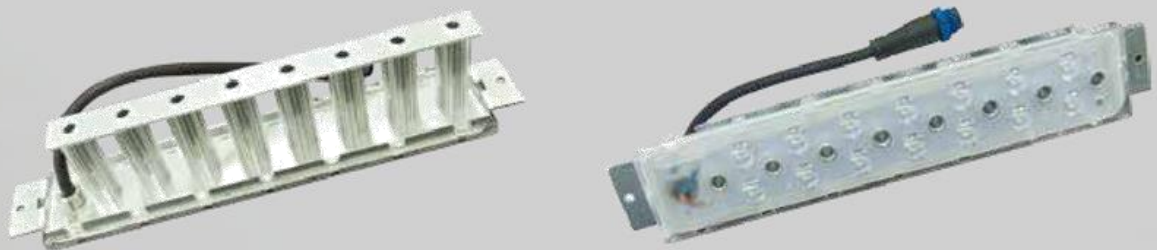


100lm/w

FEATURES



Chimney effect and modular design to achieve excellent heat dissipation and free combination of different power range.



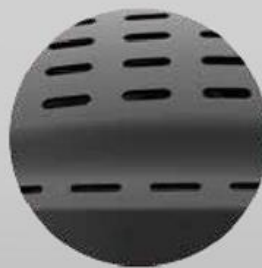
Brilliant vertical heat dissipation with less space and available to expand different powers.



Leaking hole design



Chimney effect heat sink modules, simple structure, light and practical



Porous material design helps air convection, improving heat dissipation efficiency.

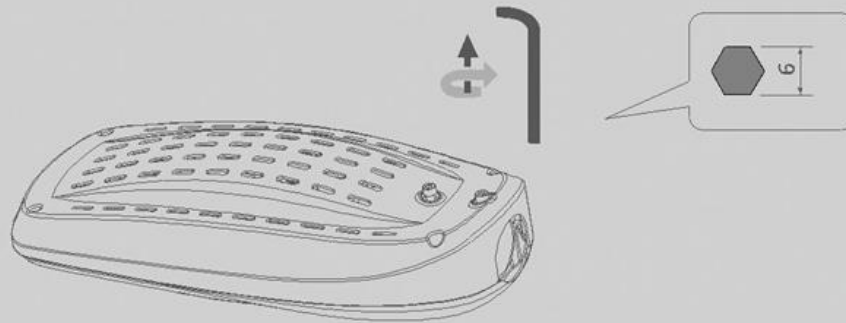


Easy access to installation and disassembly without opening cover.

INSTALLATION

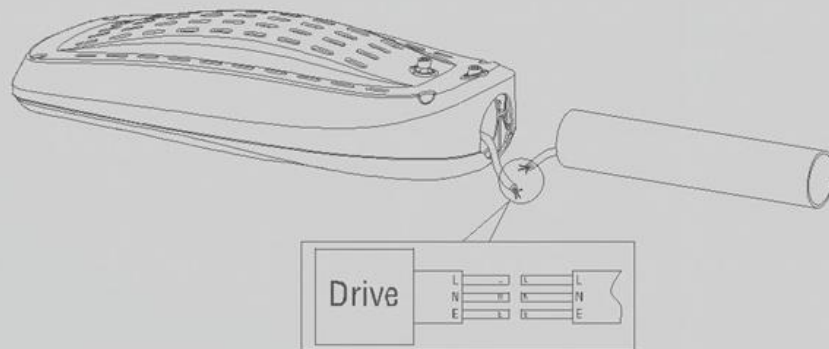
Step one

Loosen the two screws on the rear of the lamp by using hex cap wrench.



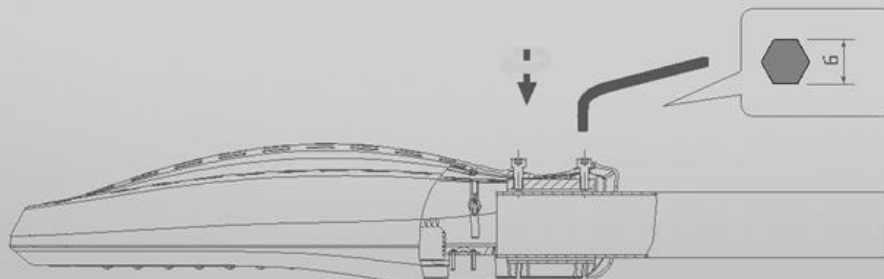
Step two

Wire connection—Turn off power supply, connect circuit under good insulation, L-L, N-N, E-E. Then insert the fixture into lamp post.



Step three

Fixing fixture ---- Adjust the lamp position, fasten the two screws on the rear of the lamp




PARAMETER

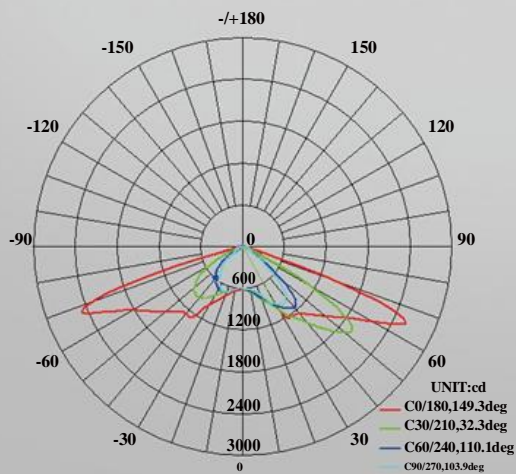
Technical	Specification	AU-SL-30	AU-SL-40	AU-SL-60	AU-SL-90	AU-SL-120
Electrical	Power Consumption	30W	40W	60W	90W	120W
	Input Voltage	AC200-240V				
	Input Frequency	50/60Hz				
	Power Factor	> 0.95				
	Power Supply Efficiency	≥90%				
Optical	LED Chip Brand	Philips-Lumileds				
	Driver Brand	INVENTRONICS				
	Luminous Flux (Lumen Output)	3000Lm	4000Lm	6000Lm	9000Lm	12000Lm
	Luminous Efficacy (Lumens per Watt)	≥100Lm/W				
	Correlated Color Temperature (CCT)	4000K / 5700K				
	Color Rendering Index (CRI)	Ra≥70				
	LED Module Usage	1	1	2	3	3
Environmental	Ambient Operating Temperature	-40°C ~ +50°C (-40°F to 122°F)				
	Ambient Operating Humidity	10%~90% RH				
	Optimal Operating Temperature	25° C (77°F)				
Mechanical	Housing Material	SMC Polymer Composites				
	Lens Material	PC				
	Mounting Options	Ring type Mount Self-locking type Mount				
	The max Installation Diameter	Φ60/Φ48mm				
	IP Rating	IP67				
	Net Weight (KG)	2.8kg/6.2lbs		3.2kg/7.1lbs		4.0kg/8.8lbs
	Dimensions (L×W×H)	552×250×125 mm 21.7×9.8×4.9in				
Packing	Total Weight (KG)	3.5kg/7.7lbs		4.0kg/8.8lbs		4.8kg/10.6lbs
	Dimensions (L×W×H)Vibration	3G		590×280×175 mm		23.2×11×6.9in
Warranty		5-Year & L70@50,000Hrs				
Certification		PC	CE	CB	RoHS	IK08

specifications subject to change

APPLICATION



OPTICS	LED MODE		VOLTAGE	FINISH
TYPE- II..... 	NO.LED DRIVE CURRENT	COLOR	50W	STANDARD TEXTURED FINISH
	14LED	TEMP-CCT	40W	RAL-9007
	28LED	NW(4000K)	60W	RAL-9001
	42LED	CW(5700K)	90W	
			120W	



AVERAGE BEAM ANGLE(50%):98.9 DEG